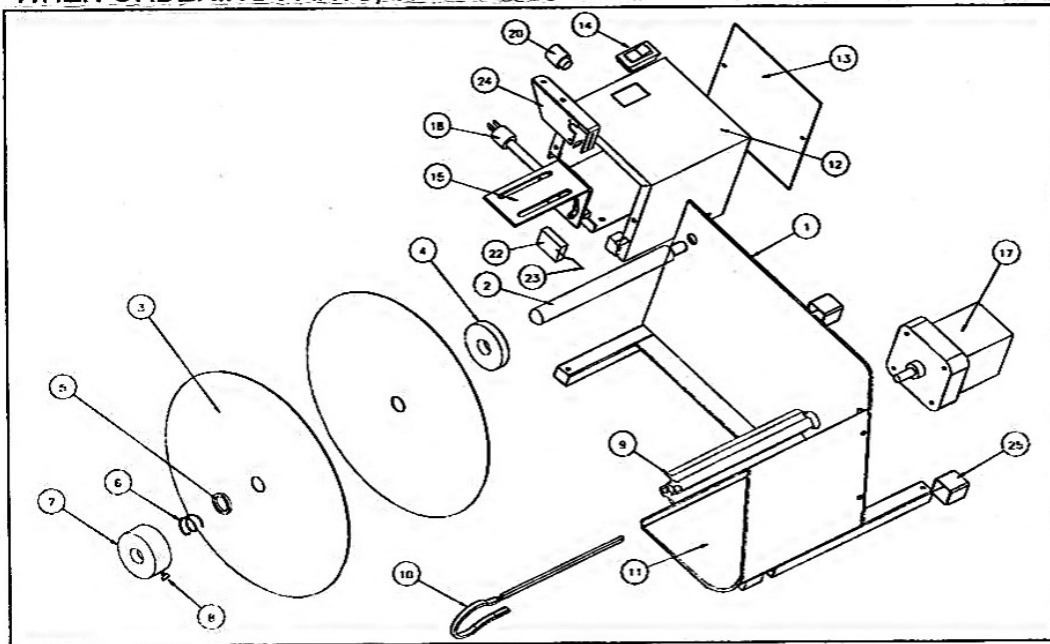


PARTS LIST TAKE-A-LABEL Models TAL-250 and TAL-450

Part No.	Item No.	Description	Part No.	Item No.	Description
1	72615	Main Frame	15	25120	Mico Switch Mounting Bkt.
2	25109	Unwind Shaft/250	17	76800	Gear Motor
2	45125	Unwind Shaft/450	18	45152	Power Cord
3	45136	Unwind Disc	19	45153	Power Cord Clamp (Not Shown)
4	72618	Unwind Brake Mtl.	20	45155	Fuse Holder
5	25112	Unwind Washer	21	45157	Fuse 3 Amp. (Not Shown)
6	25113	Unwind Spring	22	45307	Label Switch Models 2015 and Newer
7	26001	Unwind Collar	23	45208	Trip Wire Models 2014 and Older
8	26002	Unwind Hub Screw	23	45308	Trip Wire Models 2015 and Newer
9	25114	Waste Wind Shaft/250	24	45309	Switch Assembly
9	45129	Waste Wind Shaft/450	25	25122	Foot End Caps
10	25115	Waste Wind Clip/250	27	45180	Wing/Nut #10-24 (Not Shown)
10	45131	Waste Wind Clip/450	28	45181	Carriage Bolt #10-24 (Not Shown)
11	25116	Stripping Plate/250	29	45182	Nylon Washer (Not Shown)
11	45124	Stripping Plate/450	30	45183	Screw #10-32 x 1/2 (Not Shown)
12	25105	Motor/Control Housing	31	45184	Nut #10-32 Hex Nylon (Not Shown)
13	25106	M/C Housing End Plate	32	45210	Thumb Screw 10-24 x 1/2 (Not Shown)
14	25119	On/Off Switch 2007 & Older			
14	40007	On/Off Switch 2008 & Newer			

WHEN ORDERING PARTS, SPECIFY MODEL NUMBER OF YOUR MACHINE



16900 Power Drive * Nunica, MI 49448
 Phone: 616-837-9300 * Fax: 616-837-9301
 Web Site: take-a-label.com
 e-mail: sales@take-a-label.com

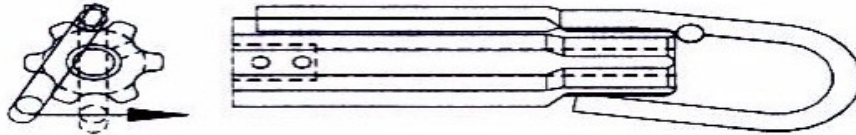
Operating Instructions for the TAKE-A-LABEL Model 250 and 450

Note: The TAKE-A-LABEL dispenser is shipped mounted to a base to prevent shifting in the container.

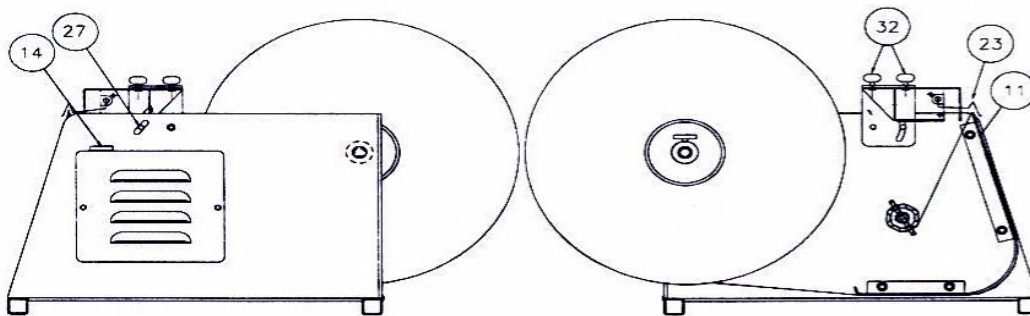
Remove the machine from the base.

Always load the TAKE-A-LABEL dispenser with the On-Off Switch (14) in the OFF position.

- 1 To load a roll of labels on the TAKE-A-LABEL, loosen the unwind hub screw (8) on the unwind collar (7) and remove the collar, unwind spring and disc of the unwind shaft.
- 2 Place a roll of labels on the unwind shaft so that the beginning of the roll is on the bottom of the web coming off to your right as you face the side of the machine.
- 3 Replace unwind disc, unwind spring and collar on unwind shaft. If using labels on a 3" diameter core, the hub on each disc will fit inside the core and support the roll of labels. If labels are on a 1" core, simply slide disc up snug against the roll of labels. When the disc is in place, tighten unwind hub screw (8) against unwind shaft.
- 4 Thread loose end of labels under and up the front of the stripping plate (11).
- 5 Lift the label switch trip wire (23) and, holding the trip wire sufficiently high to allow clearance, pull labels over top of stripping plate far enough to reach the waist take-up roll (9).
- 6 Remove the waist wind clip (10), thread label backing paper under clip, and reinsert clip over loose paper.



- 7 Position switch assembly (24) by loosening thumb screws (32) and moving assembly to right or left so that the trip wire (23) is at or near the center of the labels. The label switch assembly can be tilted forward or backward by loosening the mounting bracket vertical adjustment wing nut (27).
- 8 Turn on On-Off switch (14). The waist wind shaft (9) will turn, winding up backing paper and exposing a label at the top of the stripping plate. When the label lifts the trip wire the motor will stop. As each label is removed, the machine will operate until the next label is in position to be removed. CAUTION: Turn off switch (14) before removing wound up waist.
- 9 If labels tend to follow backing paper over the top of the stripping plate instead of peeling off and lifting the label switch trip wire, there is probably insufficient tension on the web of the labels. The unwind tension adjustment collar (7) should be moved in to put more tension on the web.
- 10 If the motor stalls it may be necessary to move the tension adjustment collar (7) out to reduce the amount of unwind tension.



16900 Power Drive * Nunica, MI 49448
Phone: 616-837-9300 * Fax: 616-837-9301
Web Site: take-a-label.com
e-mail: sales@take-a-label.com