



CENTM100
Capsule Counter
Operation Manual



866-888-6327 sales@clevelandequipment.com
3889 E Raines Rd
Memphis, TN 38118
www.clevelandequipment.com

Contents

1 SAFETY INSTRUCTION	3
2 PRODUCT DESCRIPTION.....	4
2.1 Front.....	4
2.2 Attached Spare Part	5
3 Before Operation	6
3.1 Installment	6
3.2 Power and Air Connection	7
3.3 Outlet Adjustment	8
3.4 Bottle Bracket Adjustment	9
3.5 HMI Control Panel.....	10
3.6 Counting Adjustment	12
3.7 V31 Optical Amplifier Setting.....	13
4 Maintenance	14
4.1 Tank	14
5 Trouble Shooting	18
5.1 Capsule/Capsule Overlaps.....	18
5.2 No Power	18
5.3 No Vibration.....	19

1 SAFETY INSTRUCTION

This manual is designed for operators who are not acquainted with the machine, so please follow the instructions to operate and adjust the machine step by step. If you cannot thoroughly understand some of the instructions, please ask experienced technicians for help or contact us. Thank you!

Note: Please read this user manual in detail before taking any action to operate the machine!



- This machine is driven by 110 or 220 VAC. The voltage should fit for the power standard of the machine and should always stay within the security limit.



- Only engineering technicians are allowed to make adjustment of the machine, but any adjustment is forbidden while the machine is running. Failure to follow this warning may expose the operator to danger.



- Do not place the machine near high temperature or inflammables. The places where are not stable or where the machine will be crashed easily are also not suitable to place the machine.

- To prevent from getting electric shocks, the machine cannot be placed in a humid environment.

- Do not attempt to remove/replace parts or to use the machine for any other purpose other than what is recommended by us.

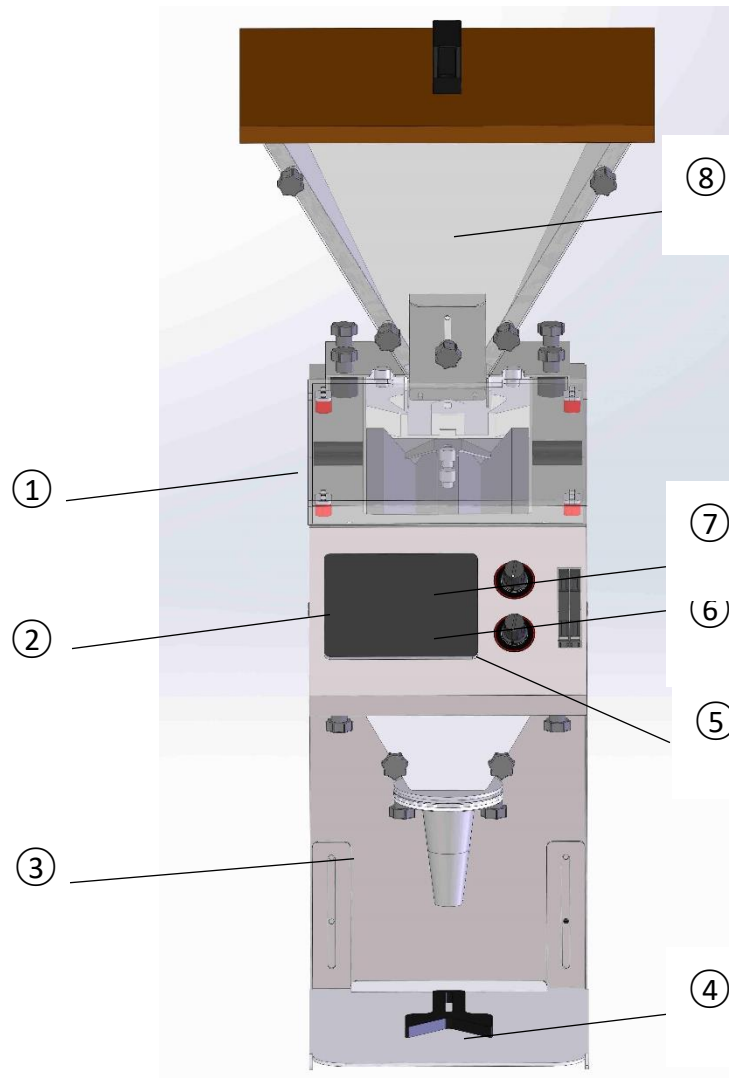
- Do not randomly apply lubricants to any part of the machine.

Notice of Equipment Improvements & Document Revisions

We continually devotes to developing and researching for new items and reserves the right to change or terminate the production specifications and features which are presented in this manual without notice and without taking any responsibilities. We have also strived to provide all the needed information in this guide, but if there is any error, we reserves the right to correct for the next revisions.

2 PRODUCT DESCRIPTION

2.1 Front



- | | |
|------------------|--------------------------|
| ① Channel | ⑤ Sensor |
| ② HMI | ⑥ Speed knob for channel |
| ③ Filling nozzle | ⑦ Speed knob for hopper |
| ④ Holder | ⑧ Hopper |

2.2 Attached Spare Part

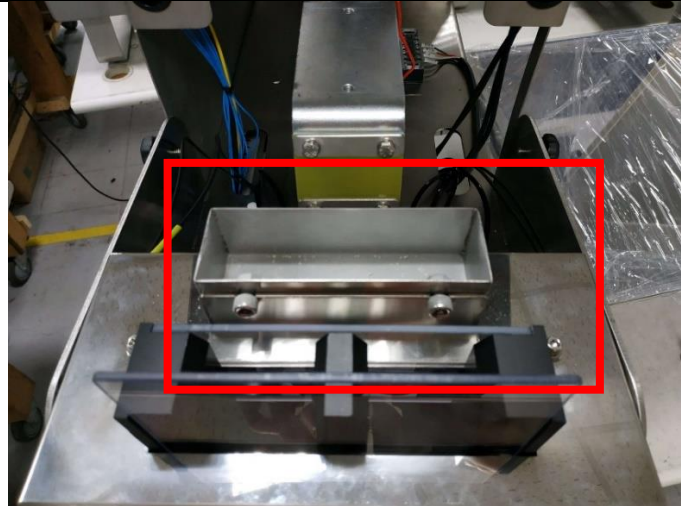


ITEM	PART
1	Air Hose
2	Dust container
3	Star knob
4	Relay
5	Cutter of optical fiber
6	Power cable
7	Nozzle(small)

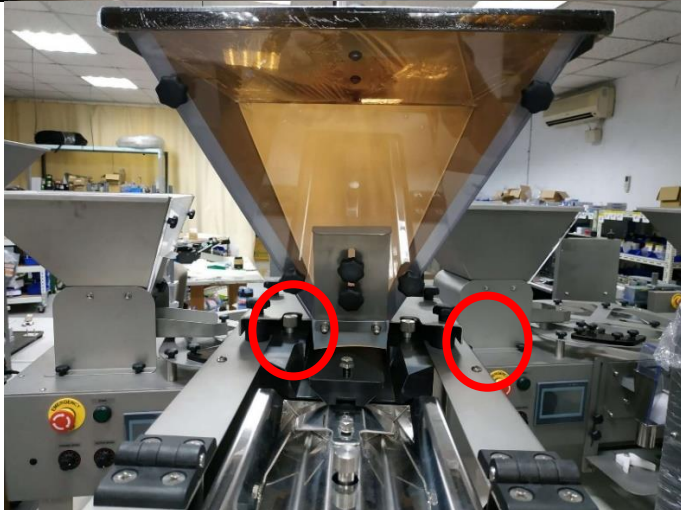
3 Before Operation

3.1 Installment

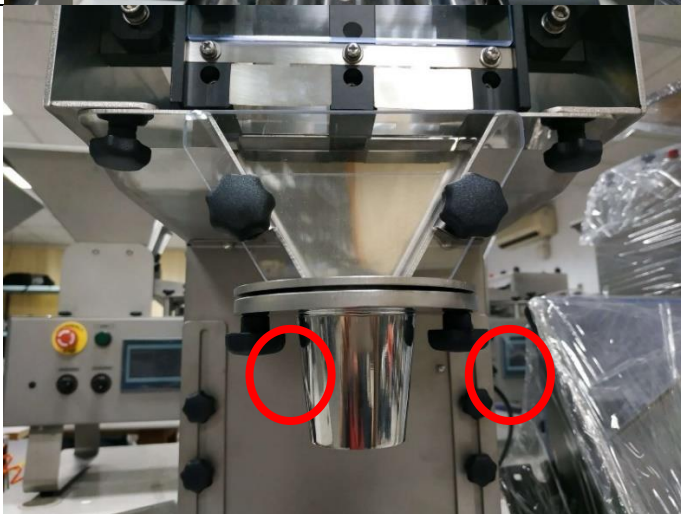
1. Put the dust tray in position.



2. Tighten the hopper with 4 screws.



3. Tighten the nozzle with 2 screws.

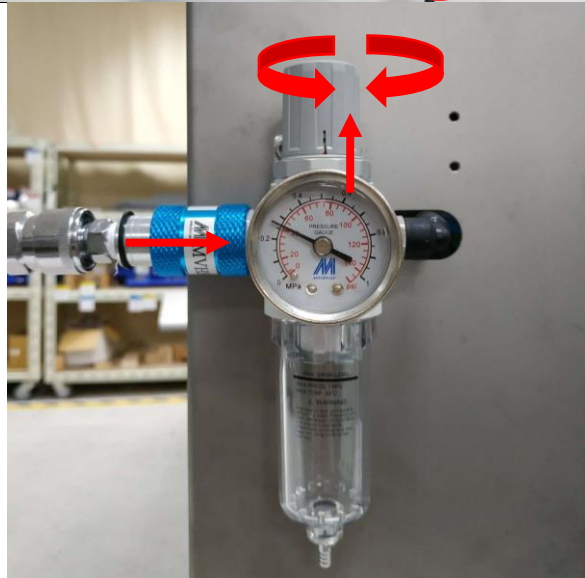


3.2 Power and Air Connection

1. Connect the air hose and power cable.



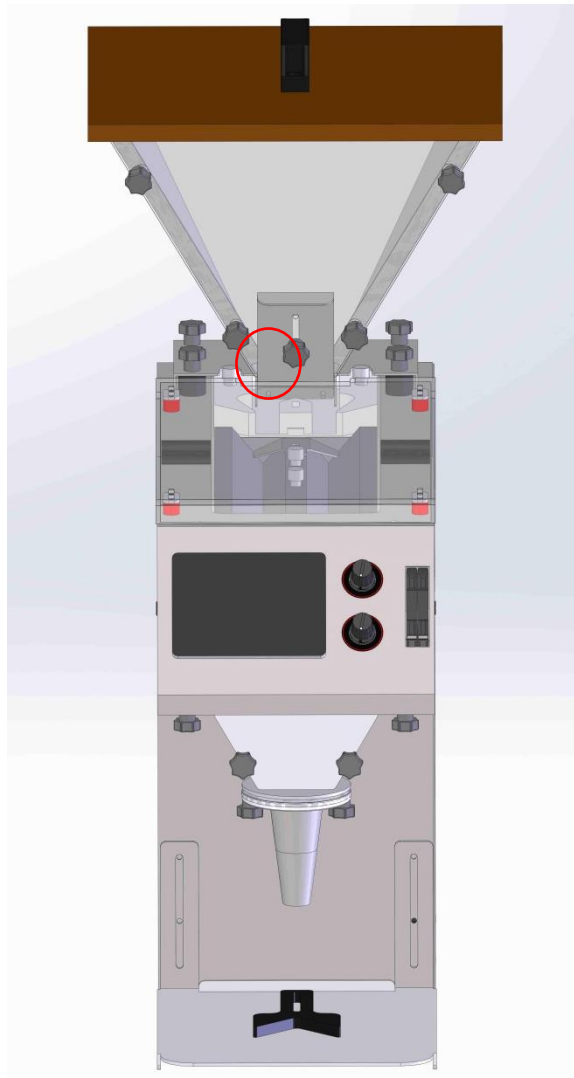
2. Turn on the air switch by pushing it to the right.
3. Pull up the adjusting knob and turn the knob to set up the pressure at 40psi.



4. Turn on the power.

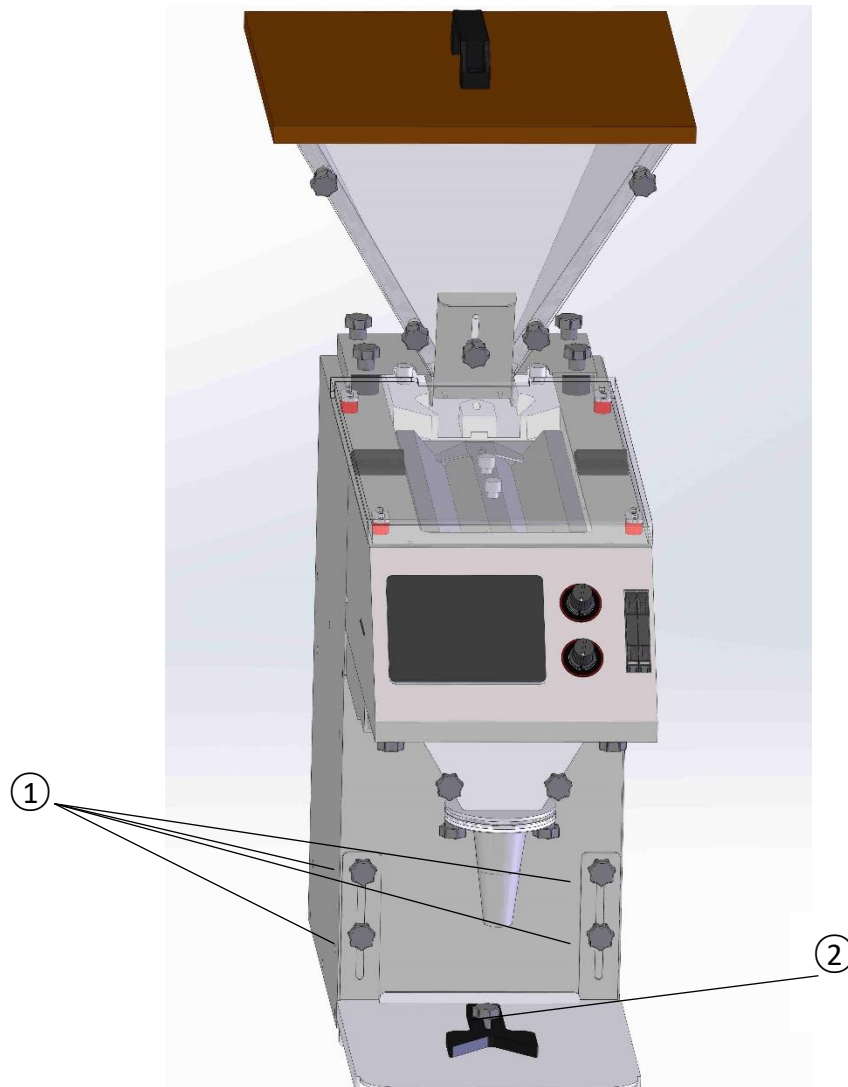


3.3 Outlet Adjustment



- The gate marked as red circle controls the feeding volume while vibrating.
- Loose star knob to adjust the gate.
 - Big size product: lift up the gate.
 - Small size product: narrow down the gate.

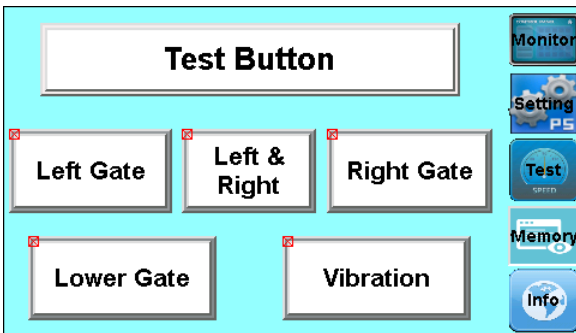
3.4 Bottle Bracket Adjustment



- STEP1 Loose the screw nut marked by ①. According to the bottle height, adjust bracket height, and make the gap of bottle neck and outlet smaller than 1 unit of pallet.
- STEP2 Loose the screw marked by ②. Align the bottleneck with outlet.
- STEP3 Tighten screw after adjusting. °

3.5 HMI Control Panel

	<p>MONITOR PAGE</p> <ul style="list-style-type: none"> ➤ STATUS: Monitor the counting status. ➤ OUTPUT: Shows the current total number of bottles. ➤ RESET After the setting bottle number is completed. Press reset button to recover standby status. ➤ OUTPUT RESET Reset the current total output as zero. ➤ SETTING(COUNT) Set up the piece count here. ➤ SETTING(BOTTLE) Set up the bottle count here.
	<p>SETTING PAGE</p> <ul style="list-style-type: none"> ➤ Pausing Time When a bottle is finished, the machine would stop vibration for secs. ➤ Upper Gate Close Delay The upper gate would close either one (left or right) before counting the last pcs. The delay time means the gate would wait for how long to close after the last pcs is counted. *Usually it is 0.07-0.08. ➤ Bottle Changing Time The time interval for you to change bottle before the machine starts to count next bottle.
	<p>MEMORY PAGE</p> <p>The PV is the present setting value. You could press save button to memory this parameter. You could also press the up and down button to choose the parameters which had saved. Press load button to the saved parameters would be the replaced to the present setting value.</p>

	<p>TEST PAGE Press test button first before you test any other functions.</p>
---	--

3.6 Counting Adjustment

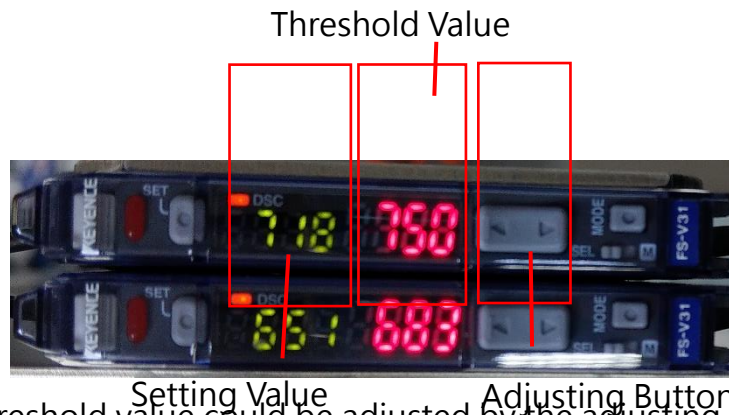


- Adjust the speed of counting and vibration tank, capsules/tablets will overlap if the vibrating speed of tank is too fast. You could speed up **channel vibrating speed** or slow down **tank vibrating speed**.
- If the capsules numbers differ more than one, please re-adjust sensor. Please refer sensor setting to 3.7 V31 Optical Amplifier.

3.7 V31 Optical Amplifier Setting

Normally, please do not randomly adjust optical amplifier.

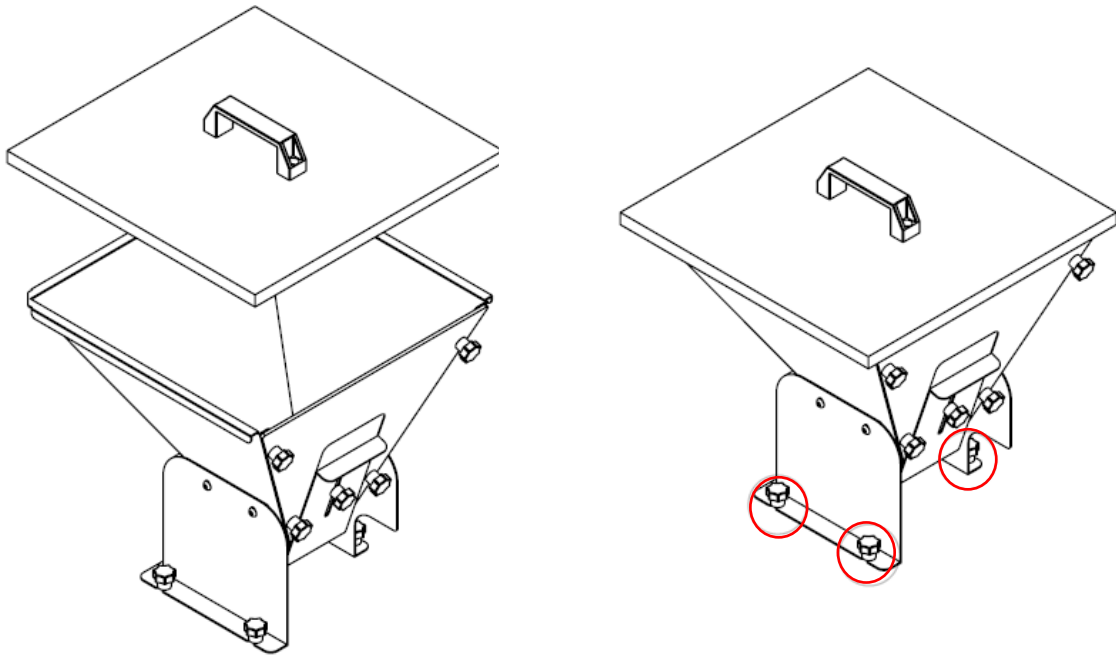
Control Interface:



1. The threshold value could be adjusted by the adjusting button
2. Please noted that setting value should be less than threshold value. Usually we would narrow down the gap of threshold value and setting value for small pieces. And for big pieces, we would increase the gap of threshold value and setting value.
3. The both setting value and threshold value is dynamic. Which is to say, you don' t have to adjust it. It would automatically variate according to product and current environment.

4 Maintenance

4.1 Tank

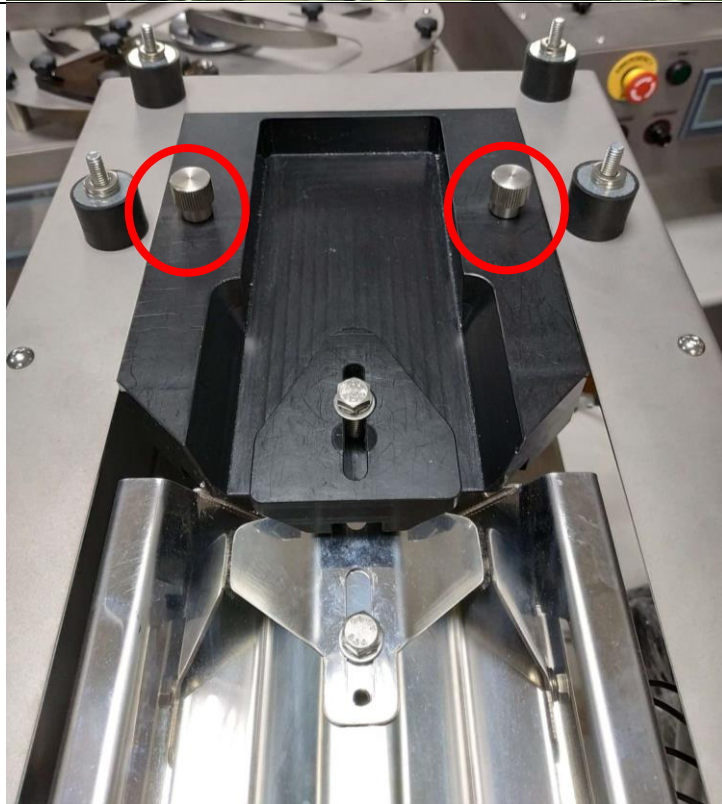


- | | |
|-------|---|
| Step1 | Take apart the cover |
| Step2 | Loose the knurled thumb screw (Circle Part) |
| Step3 | Take apart the hopper carefully |
| Step4 | Clean the hopper with water |
| Step5 | Dry the hopper. |
| Step6 | Assemble the tank with the opposite steps. |

4.2 Vibration Unit and Nozzle



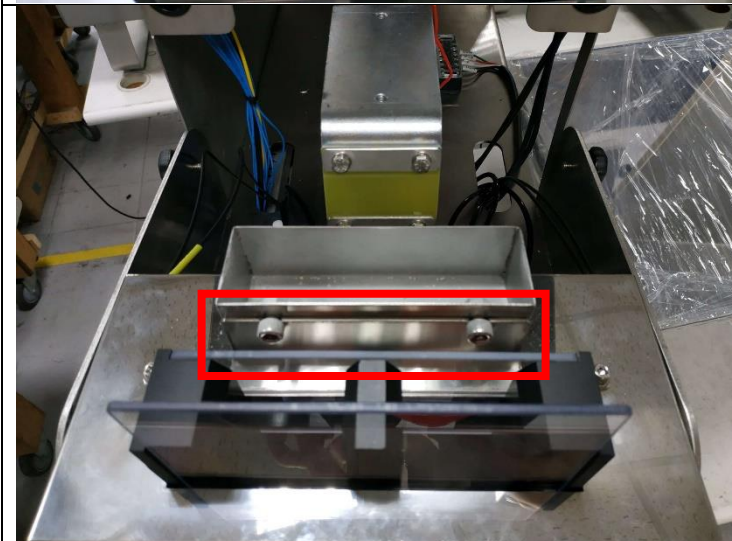
1. Loosen the screws and open the cover.



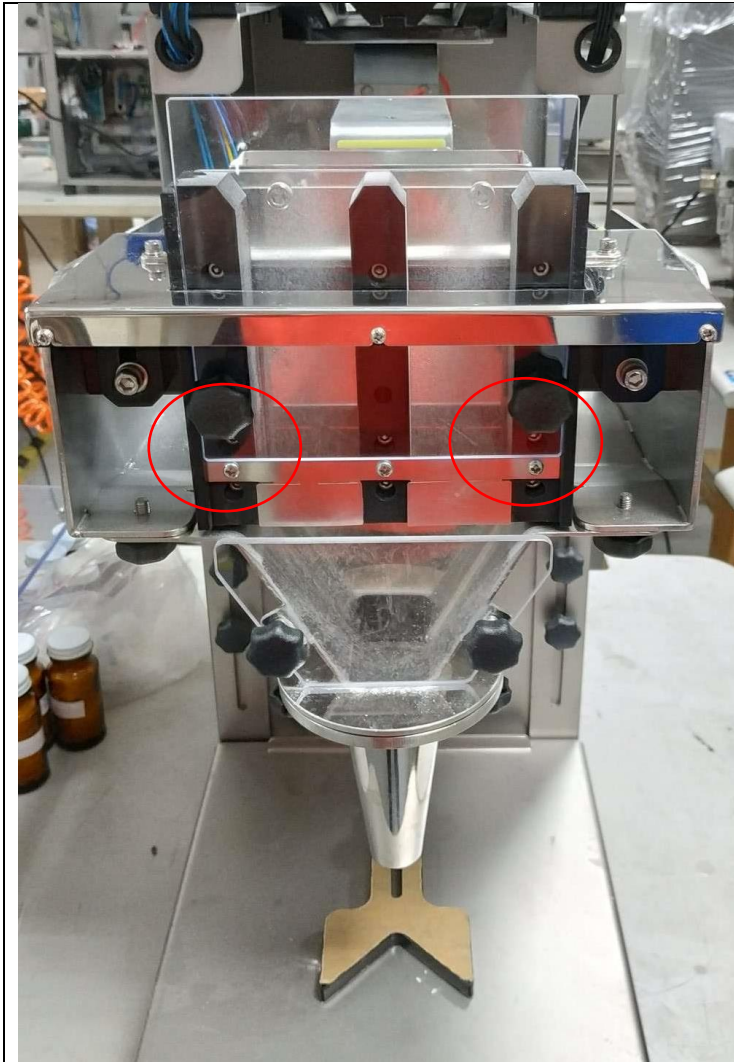
2. Loosen the screws and take out the vibration base.
3. Clean the base with water or alcohol.



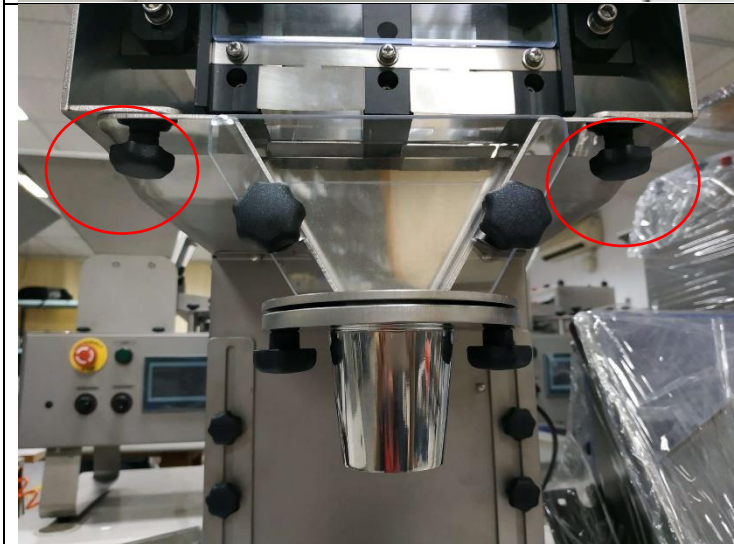
4. Loosen the screws and take out the track.
5. Clean the track with water or alcohol.



6. Take out the dust accumulation tray.
7. Clean the tray with water or alcohol.



8. Loosen these screws to take out cover.
9. Clean the cover with water or alcohol.



10. Loosen screws and take out the nozzle.
11. Clean the nozzle with water or alcohol.
12. After cleaning all parts please assemble it back.

5 Trouble Shooting

5.1 Capsule/Capsule Overlaps

- A. Press emergency stop button, and speed up vibrating channel speed or slow down vibrating tank speed..
- B. Check if put too much capsules, please narrow down the gate of the tank.

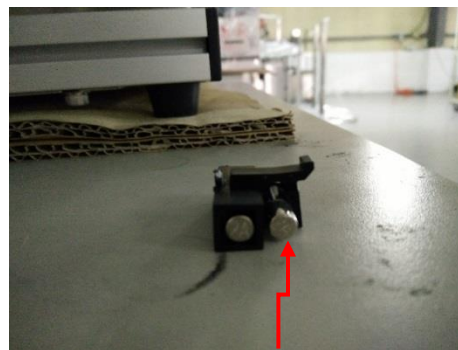
5.2 No Power

- A. Check if the power cable connects or damages.
- B. Check if power switch is "ON" .
- C. Check if the Emergency stop button is loose.
- D. Check if the fuse is blown or not.

The fuse is right behind the machine as the red mark indicates. Pull out the fuse as the red mark indicates.



There is a spare fuse as the red mark indicates.





5.3 No Vibration

