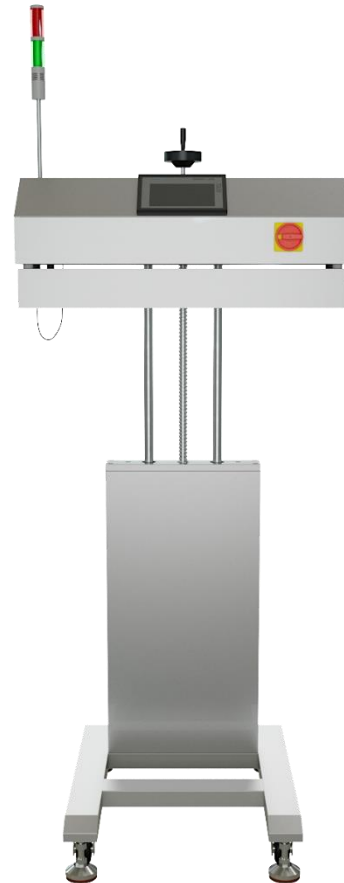


CE-IS2022

# Continuous Duty Air-Cooled Induction Sealer

Cap Diameter	20-120mm
Sealing Speed	Up to 32 ft/min (conveyor speed)
Average Power	3 kW
Electrical Requirements	220 V / 1 PH / 60 hZ
Sealing Head Height (min/max)	Min: 34" Max: 60"
Overall Machine Dimensions	31.5" L x 31" D



The Continuous Duty Air-Cooled Induction Sealing Machine is a contact-less cap sealing system to hermetically seal the top of plastic and glass containers with foil seals providing secure tamper evidence, preserve freshness, and prevent leakage. This sealing process takes place after the container has been filled and capped. The sealing head is adjustable and can be skewed to reduce exposure time, if necessary.

## Features

- Full Air Cooling System
- Efficient High Speed - may work up to 24 hours continuously
- Full modular component design minimizing maintenance requirements and increased productivity
- Alarm system and auto shut off feature in case the temperature is too high
- All 304 stainless steel body frame and contact parts
- Machine has levelers for fixed positioning
- Machine is on casters for easy positioning and mobility

## Optional Features

- Bottle Jam and Reject station
- Conveyor
- Bottle Spacing Wheel



866-888-6327

[sales@clevelandequipment.com](mailto:sales@clevelandequipment.com) [www.clevelandequipment.com](http://www.clevelandequipment.com)