



Cleveland Equipment

CE-HEAT-IT02 Heat Shrink Tunnel Instruction Manual



866-888-6327

sales@clevelandequipment.com

4403 Delp Street

Memphis, TN 38118

www.clevelandequipment.com



Table of Contents

MACHINE SPECIFICATIONS 3

SPECIFICATIONS..... 5

DIMENSIONS 5

BASIC OPERATION 6

REPLACEMENT PARTS..... 7

MAINTENANCE 8

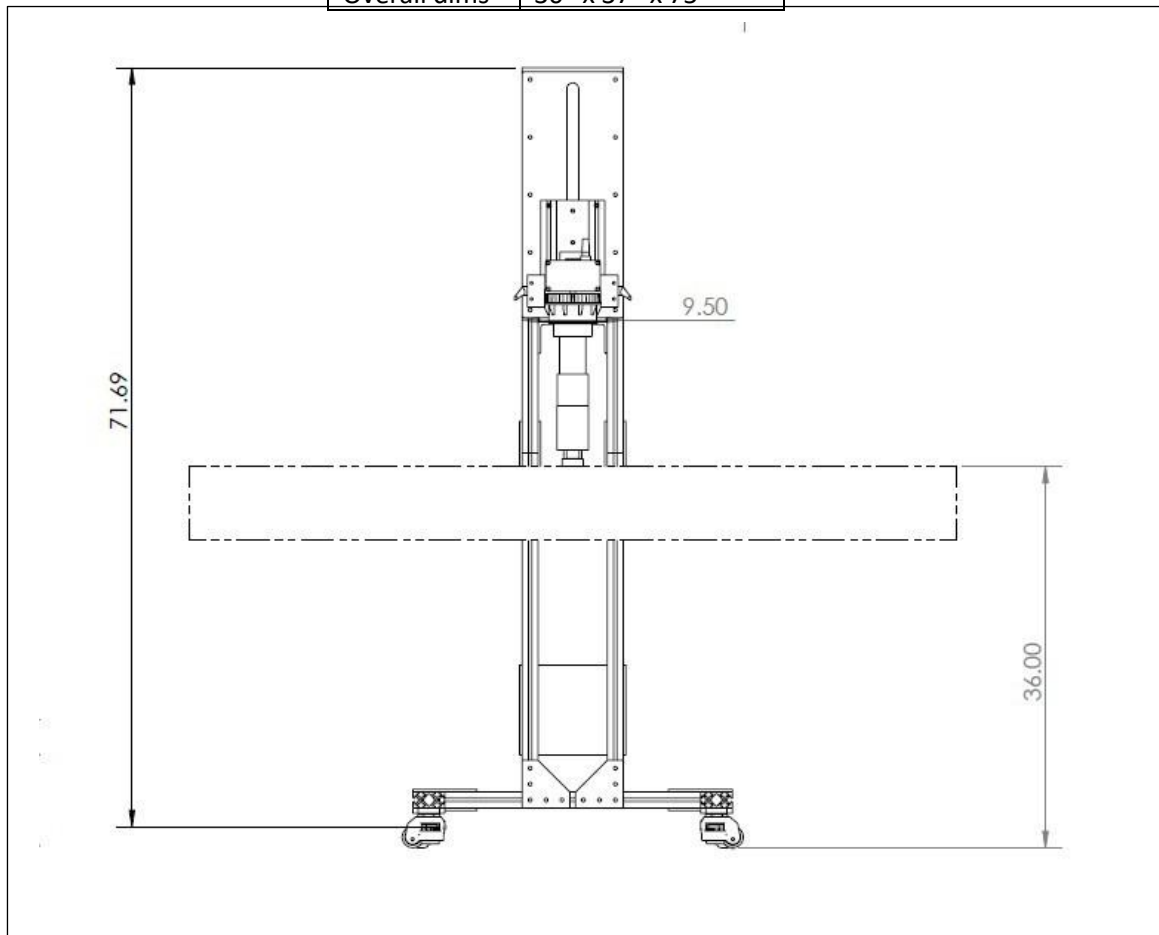


Heat-It Stand-Alone Shrink Tunnel

The CE-HEAT-IT02 Heat Shrink Tunnel is manufactured to meet highest standards for the pharmaceutical, food/beverage and many more industries. Our heat tunnel is precisely designed to ‘heat shrink’ shrinkable film wrapped around your package and it is also suitable to shrink a shrinkable neck band or body sleeve around multiple sized containers. It features an automatic lift-system that raises the heat tunnel away from the conveyor when the sensor detects no movement from the conveyor belt. This feature protects the conveyor from excessive heat. This heat tunnel can be a great alternative to steam tunnel systems.

MACHINE SPECIFICATIONS

Model	HEAT-IT02
Volts	460
Pneumatic	90 psi @ 5 CFM
Weight	300 lbs.
Overall dims	30" x 37" x 75"





- **WARNING!** Only authorized or trained personnel should operate the Heat Tunnel.
- Do not tamper with electrical wiring. Always switch off machine and disconnect power before maintenance, cleaning or repairs.
- Keep hands away from moving conveyors and other moving parts.
- **DO NOT** operate this machine without all covers and guards in place. Severe injury may result.
- Heat-sealing nozzles and parts become hot after a period of use. Keep hands away while machine is in operation.
- Do not modify this machine in any way. Modifying the machine will void any warranties.
- Some plastic films used for sealing and shrinking may release hazardous fumes at high temperatures. Provide adequate ventilation at all times,
- Unplug the Heat Tunnel when not in use.
- **IMPORTANT!** Read this manual carefully to familiarize yourself with the controls and operation. Keep in safe place for future reference.



SPECIFICATIONS

Model: HEAT-IT02

Temperature Range: Variable up to 400° at 460 VAC

Product Capability: Most heat-shrink materials used for tamper evident neck banding. Containers which may be exposed to temperature of up to 400° F. Container Size: Up to 10" high on standard container Maximum Rate: up to 100 containers/minute INPUTS

Voltage: 460V Cycles: 50/60 HZ Phase: 1

Amperage: 30.0 Amps Compressed Air

DIMENSIONS

Floor Foot Print 30" wide x 37" deep

Height: Variable 48" to 58" (120 cm to 146 cm) Container Height From 1" to 10" (2.5cm to 25.4cm) Weight 300 lbs.

CONVEYOR Requirements

Ideal height 36" +/- 1" (92cm +/- 2.5cm) Rails No rails directly under heat tunnel

CONSTRUCTION MATERIALS

Stainless Steel, Anodized Aluminum There are no contact parts- the container is not touched.



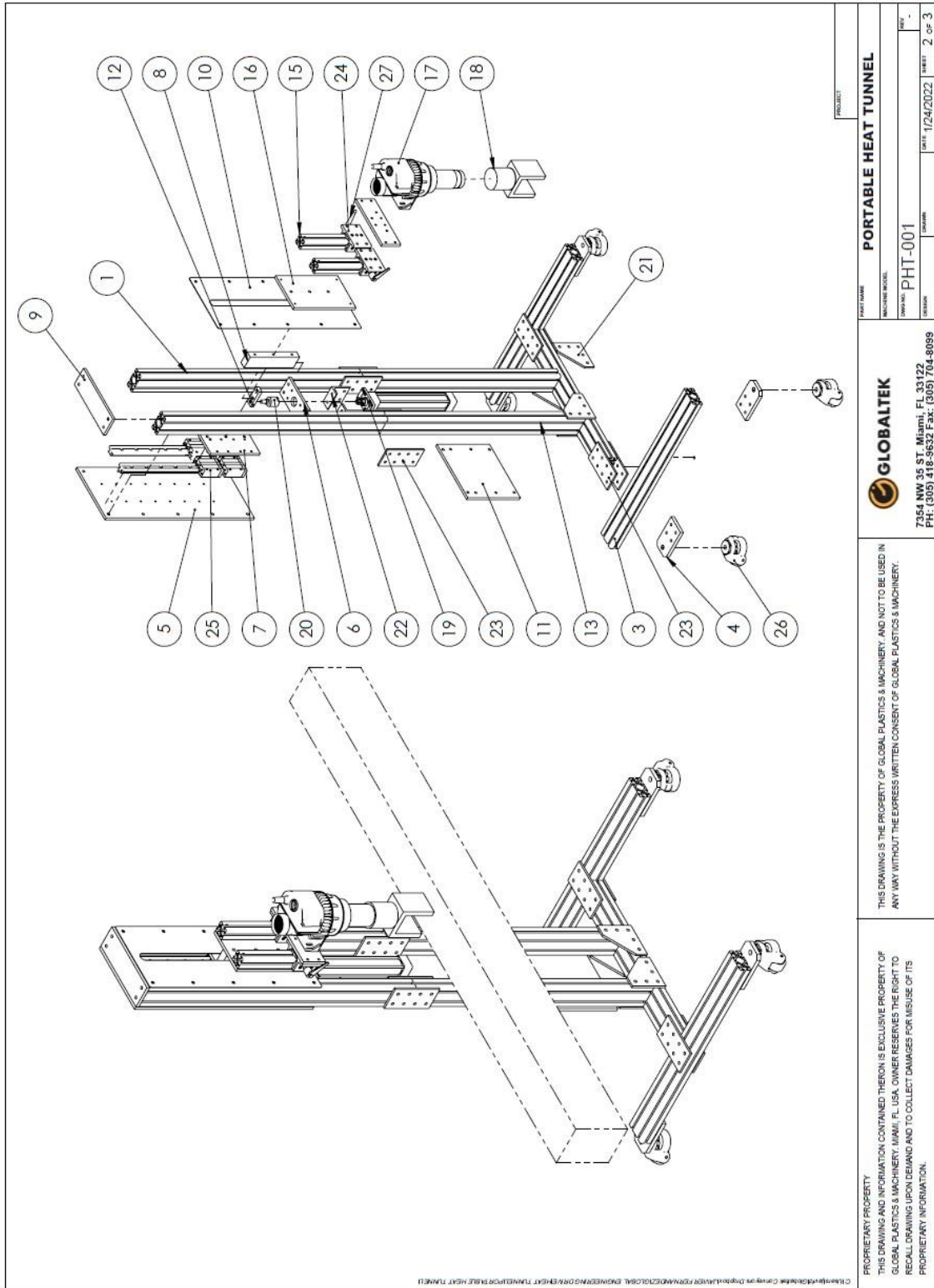
BASIC OPERATION

- 1- Make adjustments to the height of the heat tunnel over the conveyor. Height will depend on the bottle dimensions. The lower edge of the tunnel should be about 1/2 inch below the neck band. This will direct hot air toward the bottom of the band when the bottle enters the tunnel.
- 2- Line up the centerline of the tunnel over the center line of the conveyor belt. Both centerlines should be parallel.
- 3- Bottles must move from the entrance end of the tunnel which will heat the bottom of the band first. Tunnels are designed for bottles moving left to right. If the conveyor moves in the opposite direction, the tunnel can be mounted with the back side facing toward the front. Controls will not be as accessible but this arrangement will work.
- 4- Adjust the bottom blades so they close the bottom opening as much as possible without touching the bottle.
- 5- Turn on the conveyor and pass bottles through the tunnel as a 'dry run' to be sure they are not touching the bottom blade and that they fit through the 3" x 3.5" opening. Adjust the conveyor side rails so they deliver the bottle to the center of the tunnel opening. The tunnel centerline should parallel to the conveyor belt movement.
- 6- Conveyor side rails will be exposed to heat from the tunnel. Plastic rails may melt and metal rails will get very hot. The rail ends should be no closer than about 3" from the tunnel.
- 7- Turn on the conveyor so a plastic belt will be moving under the heat tunnel. If the belt is not moving, the heat from the tunnel can melt the plastic links.
- 8- Turn on the power switch and set the temperature controls to High. The hole on the center of the cover lets some air move through the blower at all times. The tunnel will heat up to about 400 degrees in about 1-3 minutes.
- 9- To determine if the tunnel is hot enough, pass a bottle with a neck band through the tunnel and examine the shrinking results.
- 10- Set the conveyor speed so the bottle is inside the tunnel for as long as necessary to get a proper shrink. Ensure the conveyor sensor is attached to the bottom portion of the belt, this ensures that the conveyor stops in case the heat tunnel shutting down to prevent damage.

CAUTION! Prior to turning the tunnel on ensure the conveyor is on and running at desired speed.



REPLACEMENT PARTS



<p>PRODUCT: PORTABLE HEAT TUNNEL</p> <p>PART NAME: PORTABLE HEAT TUNNEL</p> <p>MANUFACTURE MODEL: PHT-001</p> <p>DATE: 1/24/2022</p> <p>PAGE: 2 of 3</p>	<p>GLOBALTEK</p> <p>7354 NW 35 ST. Miami, FL 33122 PH: (305) 418-9632 Fax: (305) 704-8089</p>	<p>THIS DRAWING IS THE PROPERTY OF GLOBAL PLASTICS & MACHINERY, AND NOT TO BE USED IN ANY WAY WITHOUT THE EXPRESS WRITTEN CONSENT OF GLOBAL PLASTICS & MACHINERY.</p>	<p>PROPRIETARY PROPERTY THIS DRAWING AND INFORMATION CONTAINED THEREON IS EXCLUSIVE PROPERTY OF GLOBAL PLASTICS & MACHINERY, MIAMI, FL, USA. OWNER RESERVES THE RIGHT TO RECALL DRAWING UPON DEMAND AND TO COLLECT DAMAGES FOR MISUSE OF ITS PROPRIETARY INFORMATION.</p>
---	---	---	--



MAINTENANCE

Maintenance – No maintenance other than cleaning. Keep the inside of the tunnel clean and free of melted neck bands. Keep the ventilation holes clear.

Lubrication – there is no lubrication required.